

August 2022 Newsletter

Flushing Presbyterian Church

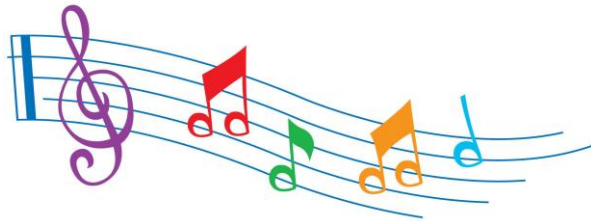
Worship: 10:00 AM Year-Round

Rev. Paul J. Pfeuffer, Pastor

5010 N. McKinley Road, Flushing, MI 48433

Phone: (810) 659-5831

www.flushingpres.org



WELCOME OUR NEW CHURCH MUSICIAN!!

A warm and friendly FPC welcome to our new Church Musician, Wendy Szukhent! Wendy will start her employment with Flushing Presbyterian Church on Sunday, August 21. The story of how Wendy came to us is very unique and most definitely Spirit driven. Wendy came to FPC in hopes of finding a piano to play on because she had been missing hers since last Fall when her home suffered extensive damage due to the storm surge that went through our area (remember those downed trees on our property?). She knew it would be a strange request but being a person of faith herself, she decided what could it hurt? Wendy came looking to be able to fulfill her desire to touch a piano after so long without and left with a new job!

We are thrilled to welcome Wendy into our sanctuary to share her talents as church musician, and embrace her into the Flushing Presbyterian Church family. Join us on Sunday, August 21, as we welcome Wendy Szukhent.

Personnel Committee

Gary Albert, Debbie Bayer, Karen Howe, Mark Jacobson, and Mike Keeler



Join us at 5:30 PM on Wednesday, August 3rd for *Camp Fellowship*. All are invited for an evening of fun and fellowship. We will have food, fire, smores, cornhole games, songs and a devotional. Come join the fun!



Outdoor
Worship
Service

Outdoor Worship Service August 7

We will be having worship service outdoors in our pavilion on August 7. Bring a folding chair for comfort, if you would like, and dress casually for a non A/C environment (in the event of inclement weather, we will move indoors). Come and enjoy worshipping the Lord in God's great outdoors!



Upcoming Communion Dates . . . August 7 & 21,
September 4 & 18.



Per Capita

It is not too late to submit your 2022 Per Capita payment of \$29.00 for every confirmed member of your family.

We have received approximately 52% of the total due so far this year.



Please note that our office hours in August will be from 9:00 AM - 1:00 PM, Monday through Thursday. The office is closed on Fridays.



We are currently collecting school supplies for local children in need. You can help by placing back packs, crayons, pencils, pens, scissors, glue stix, spiral notebooks, erasers, etc. in the large box in the Narthex. The deadline is Sunday, August 14.



There will be no HOSTED coffee hour during August. You are welcome to prepare coffee for an informal fellowship hour on any Sunday. All we ask is that you clean up after yourself! Our regular Coffee Hour will return in September.

Kick-Off-the-School-Year Hand Out Tuesday, August 30



With the 2022/2023 school year kicking off at the end of August, we would again like to reach out and show Flushing students and staff that we care. We will be handing out free chips, water and Gatorade at the end of the school day on Tuesday, August 30th, to show our support for them and encourage them to have a great school year. We have an organized route through our parking lot that's worked very efficiently in the past but need a few volunteers. If you would like to help, please contact Julie Socha or Karen Howe. Volunteers should arrive around 2:15 PM to help set up. The students have been genuinely appreciative in the past so come enjoy an activity of goodwill for our community.

Notes of Thanks

Dear Flushing Presbyterian Church,

From Liz Maguire and Family . . .

Thank you so much for your prayers for our family and David while he was ill and after he's gone to Heaven. We are deeply grateful for the kindness and compassion you extended to our family during our time of loss.

From the Girl Scouts of Southeastern Michigan . . .

Thank you so much for being a special friend to Girl Scouts. By allowing us to use the building, you are supporting our programs to help build girls of courage, confidence and character, who make the world a better place!

From Edible Flint . . .

Thank you for your generous donation to support the work of Edible Flint. Your gift helps continue our work of supporting Genesee County in growing and accessing healthy food in order to reconnect with the land and each other. We hope we'll stay connected and support your gardening project!

From Carol Dulin . . .

Thank you, my church family, for the prayers, cards, texts and emails to comfort and support me on the death of my grandson, Dylan. Especially appreciated are the stories of your own losses of family to addiction. What heartbreaking losses.

From Kim Kelly, Executive Director, Ronald McDonald House Charities Ann Arbor . . .

I would like to thank you for your donation of pop tabs to Ronald McDonald House Charities Ann Arbor (RMHCAA). Your contribution helps make it possible for us to continue providing a "home away from home" for families of hospitalized children.

Since opening our doors 36 years ago, Ronald McDonald House Charities Ann Arbor has been keeping families with sick children together and close to the medical care they need. The support we receive from generous donors helps ensure money is never a barrier to having a place for families to stay steps away from their sick child. Our Houses are here to help alleviate some anxiety by providing lodging, meals and comfort during perhaps the most frightening time of their lives.

Keeping families close to their sick child while receiving the medical care they desperately need is at the core of what we do. Throughout the last year-and-a-half, we have navigated the constant challenges to our operations while continuing to deliver our mission. This is only possible through the generous and unwavering support of our donors and the community.

RMHCAA takes the pop tabs collected to a local recycling company and we receive money for each pound of tabs collected. Funds raised through this recycling program helps support the programs and services we provide to the families we serve. Thank you so much for your donation and your support.

**There is a collection box in the shelving unit just outside of the kitchen for donations of pull tabs. Only aluminum tabs can be accepted. If you're unsure if your tabs are acceptable or not, you can see if they stick to a magnet. If they do, then they're steel and should not be included in your collection.*



*This
Month's
Schedule*

August 7

Communion Preparer: Shirley Sanborn
Communion Servers: Gary Albert, Annette Nickel,
Dan & Flora Radspieler
Flowers:
Welcome Desk: None – Outdoor Service
Sound Board Operator: Brett Albert
Ushers: Gary Albert, Sandy & Scott Tucker
Lay Leader: Bill Churchill
Streaming: Randy Socha

August 14

Flowers:
Welcome Desk: Sandy Tucker
Sound Board Operator: Scott Tucker
Ushers: Karen Howe, Mark Jacobson, Kaye Kaufherr
Lay Leader: Lynette Daig
Streaming: Steve Howe

August 21

Communion Preparer: Shirley Sanborn
Communion Servers: Dick & Kaye Barnett, Natalie
Lucas, Julie Socha
Flowers:
Welcome Desk: None – Outdoor Service
Sound Board Operator: Randy Socha
Ushers: Debbie & Bruce Coxworth, Kathy Miller
Lay Leader: Ed Davison
Streaming: Mike Keeler

August 28

Flowers:
Welcome Desk: Debbie Coxworth
Sound Board Operator: Randy Socha
Ushers: Kathy Lescelius, Carole Noye, Dennis Sanborn
Lay Leader: Joyce Hudson
Streaming: Scott Smith



FLUSHING CHRISTIAN OUTREACH CENTER

The special focus items requested by the Flushing Christian Outreach Center (FCOC) for August are canned fruit and toothpaste. If you can help by providing these items, or any other non-perishable food or personal care items, there is a collection basket for the FCOC in the shelving unit just outside of the kitchen.



August

- 5 Brenda Hollenbeck, Kathleen & Roy Rhoads
- 6 Pamela Meranda
- 9 Brett Albert, Elle B
- 10 Dan Radspieler
- 13 Dan & Flora Radspieler
- 14 Sandy Snyder
- 17 Carole Noye
- 18 Kelly Stein
- 21 Darrah Bird-Pfeuffer, Beverly Tuttle
- 25 Dean & Pat Bemis
- 26 Michael & Sylvia Keeler
- 29 Kay Hall, Janet & Bill Ballagh
- 30 Marty & Bob Williams
- 31 Marsha Judd

Lectionary Readings

August 7: Isa. 1:1, 10-20 and Ps. 50:1-8, 22-23; Gen. 15:1-6 and Ps. 33:12-22; Heb. 11:1-3, 8-16; Luke 12:32-40

August 14: Isa. 5:1-7 and Ps. 80:1-2, 8-19; Jer. 23:23-29 and Ps. 82; Heb. 11:29 – 12:2; Luke 12:49-56

August 21: Jer. 1:4-10 and Ps. 71:1-6; Isa. 58:9b-14 and Ps. 103:1-8; Heb. 12:18-29; Luke 13:10-17

August 28: Jer. 2:4-13 and Ps. 81:1, 10-16; Prov. 25:6-7 and Ps. 112; Heb. 13:1-8, 15-16; Luke 14:1, 7-14



The Red Cross will be holding a Blood Drive at our church on Monday, August 1, from 12:00 - 5:45 PM. To schedule an appointment to donate blood, log onto redcrossblood.org, sponsor code: Flushing Community or call 1-800-Red-Cross (1-800-733-2767).



Financial Highlights

Average 2022 Collections	\$3,016
Average June Collections	\$3,665
Average 2021 Collections	\$3,122
Average needed for 2022 Budget	\$3,811

The Church Hive



Bees live in a cooperative way described as “eusociality,” or good relations. Each bee contributes a specific skill to the colony, synchronizing its efforts for the benefit of all. Likewise, a church’s health depends on all members fulfilling their responsibility to the organism as a whole. Descriptions of hive life mirror Paul’s words about the body of Christ, with members having different gifts “but the same Spirit” (1 Corinthians 12:4).

According to R.S. Beal Jr., who was both a pastor and a zoology professor, a beehive is the perfect “living illustration of how to walk in unity.” He wrote, “Those of us who have believed in Jesus belong to one another just as much as we belong to Christ. We cannot live independently of one another anymore than we can live independently of Christ. Like the bees, we must learn to practice the sacrifice, labor, sharing, and submission of love that together we ‘may grow up into him in all things, which is the head, even Christ’” (Ephesians 4:15, KJV). How are you using your own spiritual gifts to build up your church “hive”?

From the June 2022 Newsletternewsletter

Flushing Presbyterian Church 2022 Session

Budget & Finance

Debbie Bayer
Bill Churchill

Community Outreach

Carol Dulin
Sylvia Keeler

Member Care

Pat Bemis
Shirley Sanborn

Property Team

Randy Socha
Gary Stuber

Spiritual Growth

Mike Keeler
Carrie Younkin

ONGOING OPPORTUNITIES



The Book Club meets at 1:00 PM on the third Wednesday of the month at Kathy's Restaurant. All are welcome!



Bread for Life is a program that provides weekend food for students that have been identified by the Flushing Schools as needing such assistance. Our church provides a portion of the funds for this project. Volunteers pack the bags for this program at 5:00 PM on Thursdays, at Holy Cross Lutheran Church on Coutant Street.

Card Ministry



Card Ministry...Sympathy, Get Well, Thinking of You, Birthday and Christmas cards are collected for our on-going card ministry. Please deliver cards to Margaret Meehle or the church office.



Digital Church . . . Our Sunday morning worship service is on video and can be viewed via a link on our website (flushingpres.org) or watched live-streamed on Facebook on Sunday mornings or at another time of your choosing.



FLUSHING CHRISTIAN OUTREACH CENTER

FCOC (Flushing Christian Outreach Center)
One of the ways we support the Outreach Center is by collecting food and personal care items. The collection basket is located in the shelving unit just outside of the kitchen.



Music Opportunities

Music Opportunities...The **Chancel Choir** (Vocal choir) has rehearsals at 7:15 PM on Thursdays and the **Handbell Choir** rehearses at 6:30 PM on Tuesdays (September through May). Please contact Marilyn Schmoak for information on these choirs.



The Noisy Offering

The Noisy Offering is collected on the second Sunday of each month. This offering is part of *“Two Coins a Meal”* that funds hunger programs locally and around the world.



Ronald McDonald House

Aluminum tabs from beverage and other containers are collected and donated to the *Ronald McDonald House* in Ann Arbor to help support families who stay there while their children are hospitalized at the Children's Hospital. Collection box is located in the shelving unit in the hall outside of the kitchen.



Opportunities To Serve

Session Teams...All members are invited to serve as “at-large” members on our Session Teams: Spiritual Growth, Community Outreach, Member Care, Property and Budget & Finance. The church office can put you in contact with the team chairperson.



Soup Kitchen...Volunteers work at the North End Soup Kitchen in Flint on the second Tuesday of each month, from 9:00 AM – 1:00 PM.



Youth Group (The “Believers”) is for teens in grades 7 through 12. They meet on Sundays for fun, fellowship, study and mission projects. Contact Sandy or Scott Tucker for information.

Please address questions to the contact person listed or call the church office at 659-5831





AUGUST 2022

Sunday	Monday	Tuesday	Wednesday	Thursday	Friday	Saturday
	1 12:00 PM – Blood Drive	2	3 5:30 PM – Camp Fellowship	4 10:00 AM – Member Care	5 Church Office Closed	6
7 Communion Outdoor Worship Service	8 6:00 PM - B & F	9 6:00 PM – GFWC (Flushing Women’s Club) 6:30 PM – Property	10 10:00 AM - Community Outreach 6:30 PM - Spiritual Growth	11	12 Church Office Closed	13
14 Noisy Offering	15	16 6:00 PM – GFWC (Flushing Women’s Club)	17 1:00 PM – Book Club – Kathy’s Restaurant	18	19 Church Office Closed	20
21 Communion	22 6:45 PM - Session	23	24 6:00 PM – GFWC (Flushing Women’s Club)	25	26 Church Office Closed	27
28 2:00 PM – Bemis Anniversary Party	29	30 2:15 PM – High School Hand-out	31	<div style="border: 1px solid black; padding: 5px; display: inline-block;"> Summer Office Hours 9:00 AM – 1:00 PM, Monday - </div>		

Please note that the church office is closed on Fridays